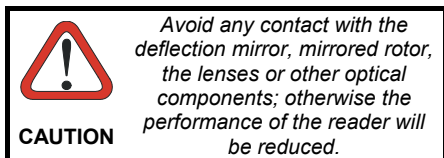


GFC-2x00 Mounting Instructions to 2KN Scanners produced before August 2009

When mounting GFC-2x00 to a 2KN family scanner produced **before August 2009** (see product label), only the following items are used for mounting:

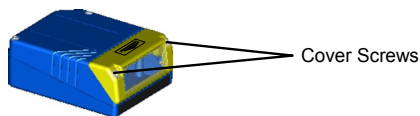
- Deflection Mirror bag 1
 - Fixing Screws in bag 1
- 1) Remove the 2KN 0° scanning window from the scanner by unscrewing the two cover screws.



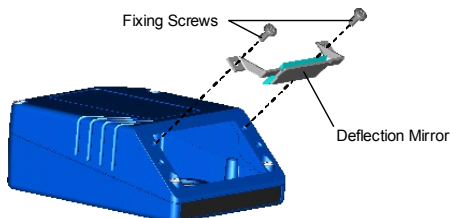
- 2) Fix the mirror (from bag 1) to the device by means of the two fixing screws (**from bag 1**).
- 3) Clean the mirror surface and reading window with a clean soft cloth and alcohol before closing the scanner.
- 4) **Remount the 0° scanning window** so that the opening face is now at 90° with respect to the scanner body. Tighten the two cover screws.

The reading position with respect to the scanner is shown for each mirror.

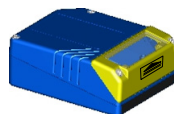
For this mounting procedure the parts in bag 2 (90°/105° scanning window and fixing screws) are not used



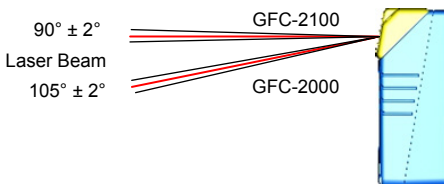
2KN Scanner Without Deflection Mirror



Mounting Deflection Mirror



2KN Scanner With Deflection Mirror




Laser Beam Output Position

GFC-2x00 Mounting Instructions to 2KN Scanners produced in or after August 2009

When mounting GFC-2x00 to a 2KN family scanner produced **in or after August 2009** (see product label), only the following items are used for mounting:

- Deflection Mirror bag 1
- Fixing Screws in bag 2
- 90°/105° Scanning Window in bag 2

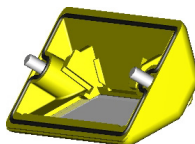
- 1) Remove the 2KN 0° scanning window from the scanner by unscrewing the two cover screws.



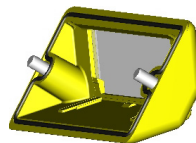
CAUTION

Avoid any contact with the deflection mirror, mirrored rotor, the lenses or other optical components; otherwise the performance of the reader will be reduced.

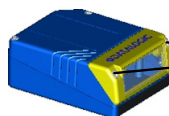
- 2) Fix the mirror (from bag 1) to the device by means of the two fixing screws (**from bag 2**).
- 3) Clean the mirror surface and reading window with a clean soft cloth and alcohol before closing the scanner.
- 4) **Mount the 90°/105° scanning window (from bag 2)** so that the opening face is now at 90° with respect to the scanner body. Tighten the two cover screws.



0° Scanning Window
(original scanner part)

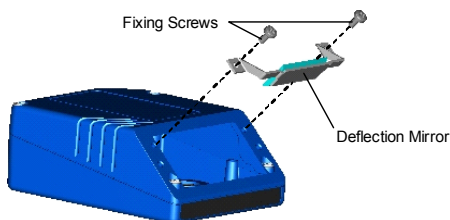


90°/105° Scanning Window

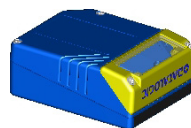


Cover Screws

2KN Scanner Without Deflection Mirror

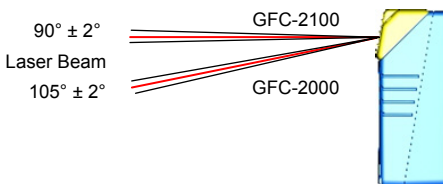


Mounting Deflection Mirror



2KN Scanner With Deflection Mirror

The reading position with respect to the scanner is shown for each mirror.



Laser Beam Output Position